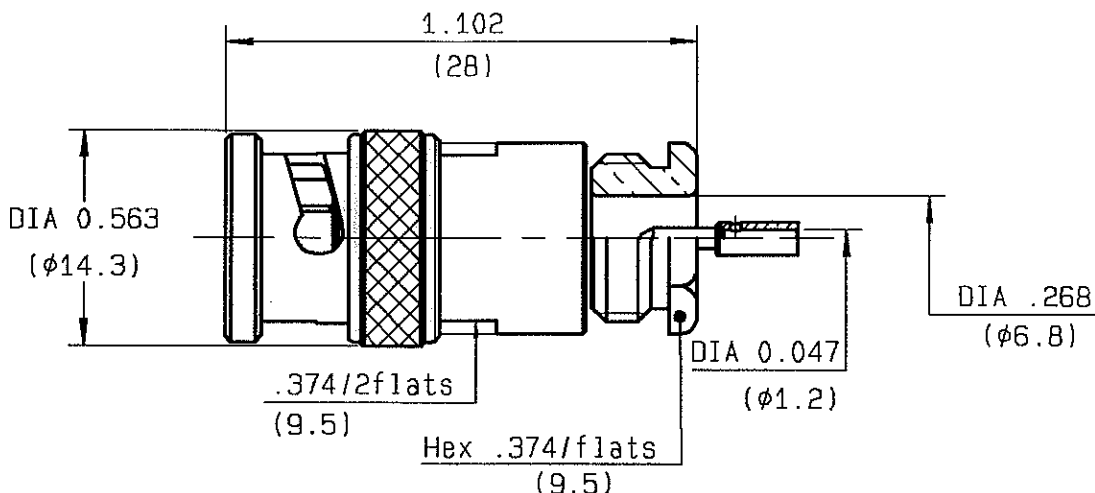


STRAIGHT PLUG  
CABLE 75 PD 6.2DIA



WEIGHT 0.4464 oz ( 12.5 g)

CABLES : -

CHARACTERISTICS

NOMINAL IMPEDANCE	50 Ω
FREQUENCY RANGE	0-4 GHz
TEMPERATURE RATING	-65/+165 °C
VSWR	AD + - x F(GHz)Max1
RF INSERTION LOSS	AD√F(GHz) dB Maxi
VOLTAGE RATING	500 Vrms Max
DIELECTRIC WITHSTANDING VOLTAGE	1500 Vrms min
INSULATION RESISTANCE	5000 MΩ min
HERMETIC SEAL	- cc/s NA Atm.cm3/s
LEAKAGE (pressurized only)	- psi NA MPa

STANDARDISATION

CABLE RETENTION

CENTER CONTACT RETENTION

	TBD	lb min
	AD	N
Axial force - mating end	5.95	lb min
	27	N
Axial force - opposite end	5.95	lb min
	27	N
Torque (Min)	NA	inch.oz cm.N
RECOMMENDED TORQUES		
Mating	-	inch.lb cm.N
	NA	
Panel nut	-	inch.lb cm.N
	NA	
Clamp nut	13.01	inch.lb cm.N
	150	

CONSTRUCTION

CONNECTOR PARTS	MATERIALS	FINISH
BODY	BRASS	NICKEL
OUTER CONTACT	BRASS	NICKEL
CENTER CONTACT	BRASS	GOLD
INSULATOR	PTFE	-
-	-	-
-	-	-
-	-	-
-	-	-
-	-	-
-	-	-

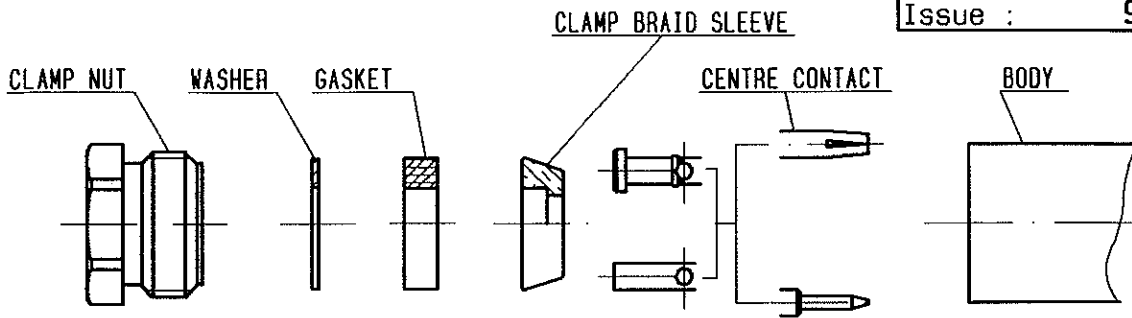
ISSUE	REVISION No	DESCRIPTION	BY	DATE
.	.	.	.	.
.	.	.	.	.
.	.	.	.	.

Initiated on 20/01/93

Superseded on - - - -

The information given here is subject to change without notice. Design changes may be in order to improve the product.

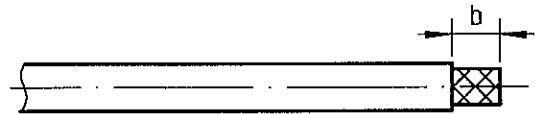




①

Strip the cable .

-  
-  
-  
-

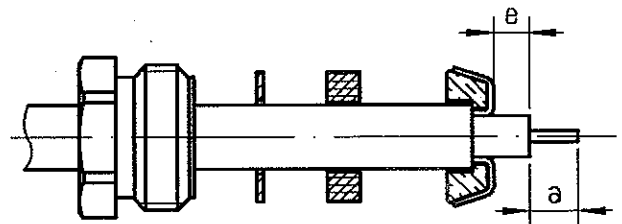


Stripping	a	b	c	d	e
inch	0.984	2.756	0	0	1.181
mm	2.5	7	-	-	3

②

Slide the clamp nut , the washer and the gasket onto the cable .  
Slide clamp braid sleeve over braid .  
Fold back braid and trim off surplus braid .  
Trim back dielectric as shown .

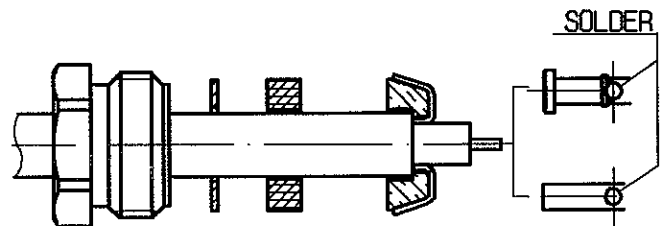
-  
-  
-



③

Solder the cable inner conductor into centre contact .

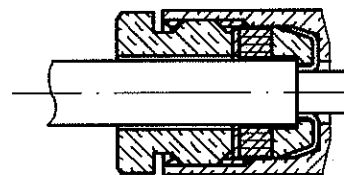
-  
-  
-  
-  
-



④

Screw sub-assembly into the connector body .  
( recommended coupling torque 13.29 in.lb )

-  
-



Hex. : 3.74/flats

12 9211